

# Stuck at Home!

Improving Home  
Language Practice with  
the SpeakEasy App



speakeasy  
community.com

# Problem: Waitlists

AT LEAST 3-6 MONTHS WITHOUT  
GETTING NECESSARY SERVICES

# Problem: Carryover

FAMILIES NEED MORE FOLLOW UP AND  
SPECIFIC IDEAS FOR HOW TO PRACTICE  
GOALS AT HOME



# Problem: Time

NO ONE HAS ENOUGH OF IT TO REALLY TEACH  
AND REINFORCE CONCEPTS!

# EI BEST PRACTICES

## **NATURAL ENVIRONMENTS**

Make learning meaningful and easy to integrate

## **ROUTINES-BASED INTERVENTION**

Make goals functional

## **FAMILY-CENTERED SERVICES**

We are treating the whole family

Dunst, Carl J., and Mary Beth Bruder. "Valued Outcomes of Service Coordination, Early Intervention, and Natural Environments." *Exceptional Children*, vol. 68, no. 3, 2002, pp. 361–375., doi:10.1177/001440290206800305.

"Early Intervention." Overview, ASHA, [www.asha.org/Practice-Portal/Professional-Issues/Early-Intervention/](http://www.asha.org/Practice-Portal/Professional-Issues/Early-Intervention/).

Kingsley, K., and Z. Mailloux. "Evidence for the Effectiveness of Different Service Delivery Models in Early Intervention Services." *American Journal of Occupational Therapy*, vol. 67, no. 4, 2013, pp. 431–436., doi:10.5014/ajot.2013.006171.

Woods, Juliann J., et al. "Collaborative Consultation in Natural Environments: Strategies to Enhance Family-Centered Supports and Services." *Language, Speech, and Hearing Services in Schools*, vol. 42, no. 3, 2011, pp. 379–392., doi:10.1044/0161-1461(2011/10-0016).

# SpeakEasy Community:

Natural  
Environment

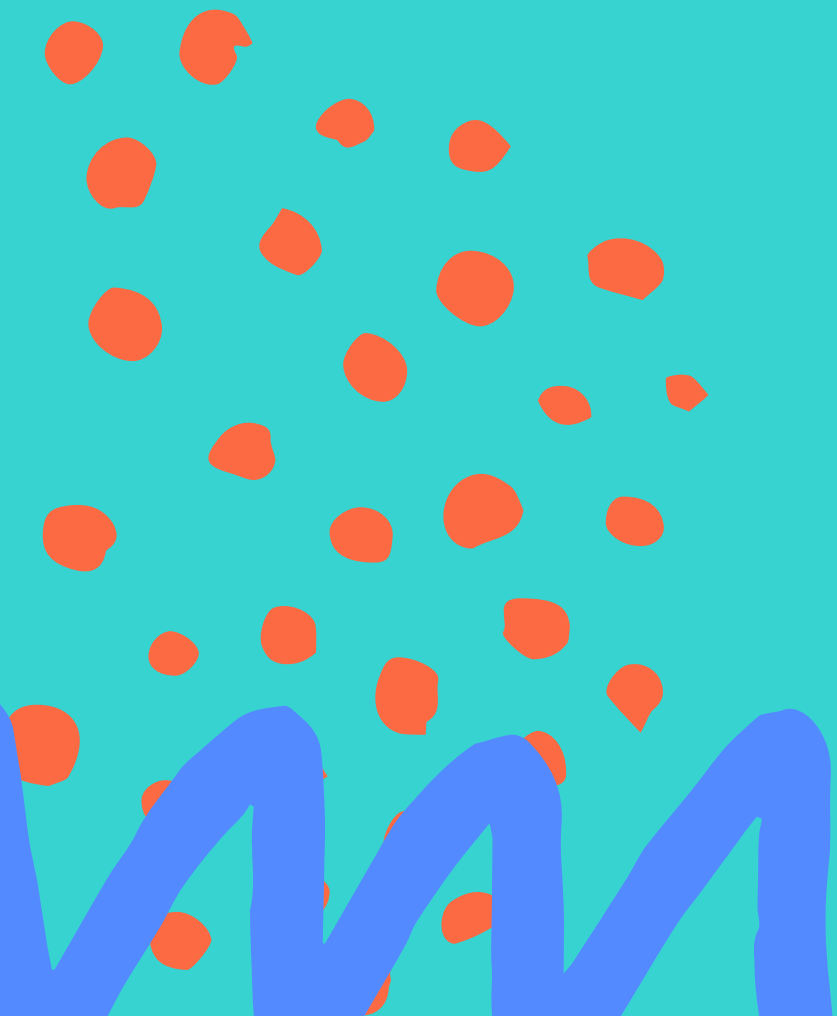
**DESIGNED FOR HOME  
PRACTICE**

Routines-  
Based

**BUILT INTO DAILY  
ROUTINES**

Family  
Centered

**FOCUSED ON  
CAREGIVER LEARNING**





**THAT MEANS**

**Better therapy outcomes for  
YOU**





speakeasy  
community

# Watch app demo on YouTube:

[https://youtu.be/EKllmq3  
klaY](https://youtu.be/EKllmq3klaY)

Let's get started

Already have an  
account? Login



# Questions

## IS IT FREE?

Yes! The beta version is free. One month (4 sets) with accompanying learning

There will always be some content available for free

Subscription coming soon with lots more content

# Questions

## WHO SHOULD USE THE APP?



Caregivers of children with delays

Caregivers of typically developing children

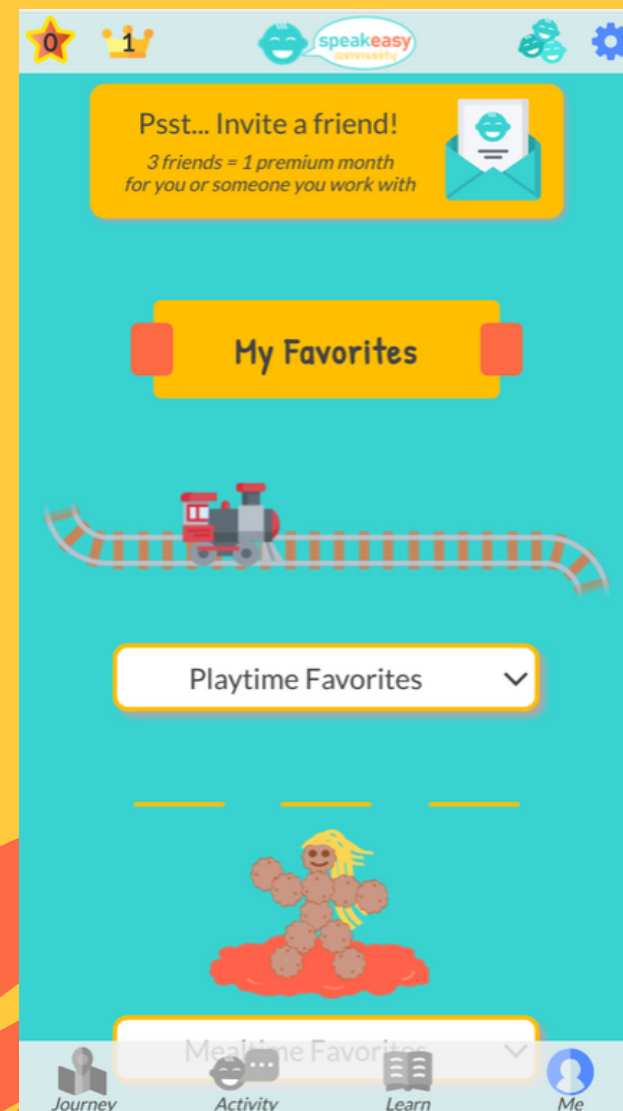
"In-between" cases

Caregivers who are "waiting" - for an eval, services, etc.

# Questions

## HOW CAN I HELP?

Simple! Go to [speakeasycommunity.com](https://speakeasycommunity.com) and sign up as a Professional.



Test out the app, and send us your professional feedback!

Spread the word! Refer a family right now from your account.

# More Questions

## I'M A PROFESSIONAL - IS THIS FOR ME?

Yes! We have a special Professionals version so you can check out the app

## WHAT AGE IS IT FOR?

There are four non-age-based levels available: Preverbal, First Words, Word Combiner, Full Sentences

## CAN I USE IT ON DESKTOP?

It's optimized for mobile, however it functions on desktop

## WHEN WILL THE FULL VERSION LAUNCH?

Summer 2020



speakeasy  
community

Let's get started

Already have an  
account? [Login](#)



**Need help?**

**HELLO@SPEAKEASYCOMMUNITY.COM**

# Thanks for joining us!

